

# national student employment week



## October 2008

*87%\* of students now expect to work on a part-time or temporary basis or during vacation periods, to support their studies, reduce student debt, and develop their own work based skills and learning.*

\*FutureTrack 2005

National Student Employment Week (NSEW) is an annual event organised by NASES (National Association of Student Employment Services) when Student Employment Services from across the UK host events designed to bring employers and students together. Individual Job Shops coordinate local and regional employability related events such as student workshops, employer recruitment days on campus, student jobs fairs and competitions.

### Contact Details

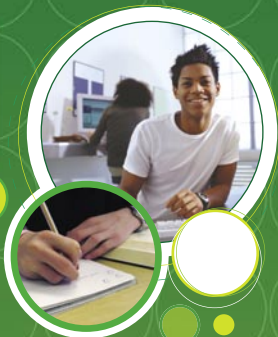
NASES, University of Liverpool

Web: [www.nases.org.uk](http://www.nases.org.uk)

Email: [nases@liv.ac.uk](mailto:nases@liv.ac.uk)



MORE SKILLS - MORE RIGHTS - MORE OPPORTUNITIES



## Five Facts

### 1. Part time workers have the same rights as comparable full-time workers.

Under the Part time Workers (Prevention of Less Favourable Treatment) Regulations, part time workers have the statutory right, to be treated the same as comparable full time workers, that is, workers on the same type of contract with the same employer. This is a right you enjoy from day one of your employment.

### 2. The National Minimum Wage.

As of 1st October 2008 the NMW rates are:

for workers aged 22 and over

for workers aged 18 - 21

for workers aged 16 and 17

£5.73 per hour

£4.77 per hour

£3.53 per hour

### 3. The Working Time Regulations.

- The right to a break if the working day is longer than six hours
- A limit of an average 48 hour working week (you can agree with your employer to work longer this agreement must be in writing and signed by you)
- All workers are entitled to a minimum of four weeks' paid holiday per year. The pay you receive should be the same as for a normal week's work

### 4. Students are not exempt from tax.

Students pay tax and national insurance just as other workers do but you don't pay tax on all your earnings. The standard personal allowance for a single person in the tax year 2007-2008 is £5,225. If you earn less than this you will not need to pay income tax. If you are planning to work in the vacations ONLY and you know your income will not exceed the personal allowance you can ask to sign a P38 to stop tax being deducted.

### 5. International students.

Most International students no longer need a permit to work in the UK while registered as a student, although there can be restrictions to the amount and type of work they can undertake.

- Students from the EEA can work in the UK without restrictions
- Students from the new Accession states must register to work in the UK
- Students from other countries must check their passport stamp to see if they can work with certain restrictions

**For full information on all these areas and much more visit [www.morethanwork.net](http://www.morethanwork.net)**